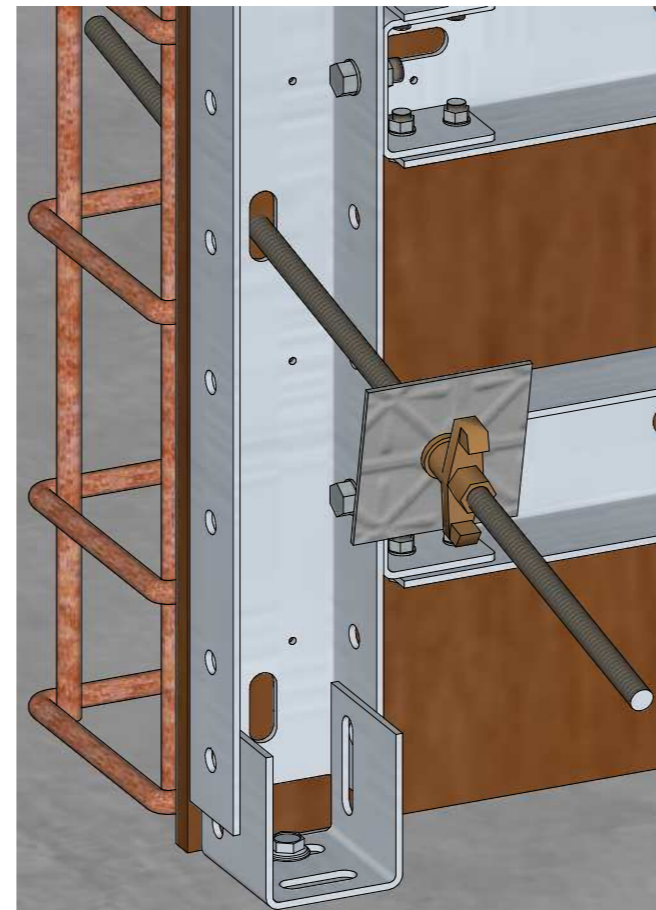


REVISION	DATE	DESCRIPTION	SIGNED
0	4/05/17	ORIGINAL VERSION	K.P.

# DOUBLE SIDED WALL SYSTEM - TIE BARS' FIXING STEP BY STEP GUIDE

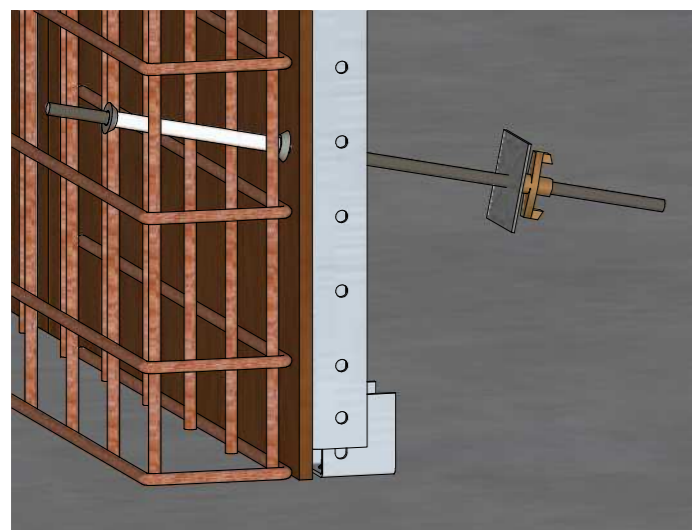


STEP ONE:  
PRE-DRILL HOLES FOR TIE BARS IN PLYWOOD.

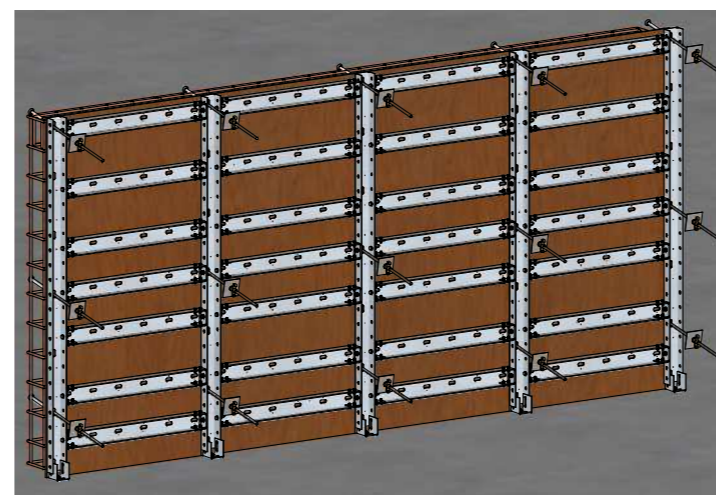


STEP TWO:  
POSITION TIE BAR THROUGH THE PLYWOOD HOLE. LOOSELY SECURE PLATE AND WING NUT.

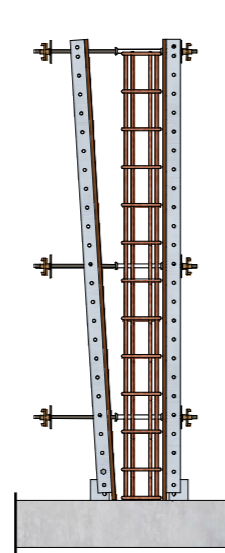
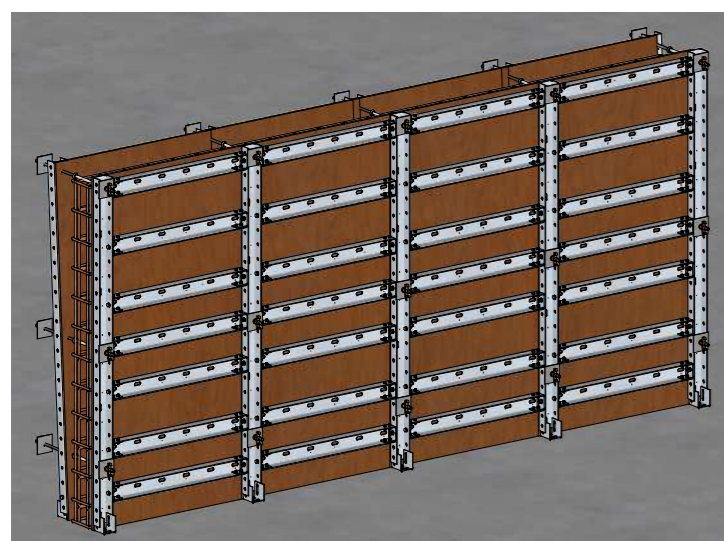
**IMPORTANT**  
REINFORCEMENT MAY NEED TO BE MOVED/ADJUSTED TO ALLOW TIE CLEARANCE



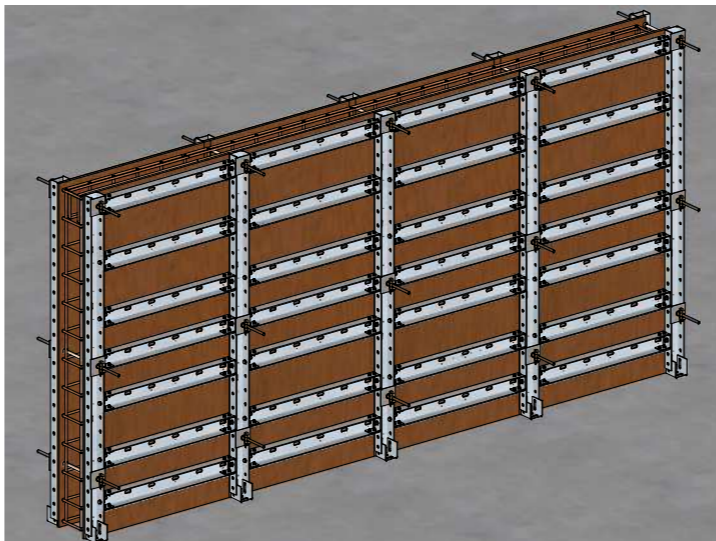
STEP THREE:  
SLIDE ASSEMBLED PLASTIC SLEEVE WITH CONES OVER THE TIE BAR.



STEP FOUR:  
REPEAT THE PROCESS FOR ALL TIE BARS.



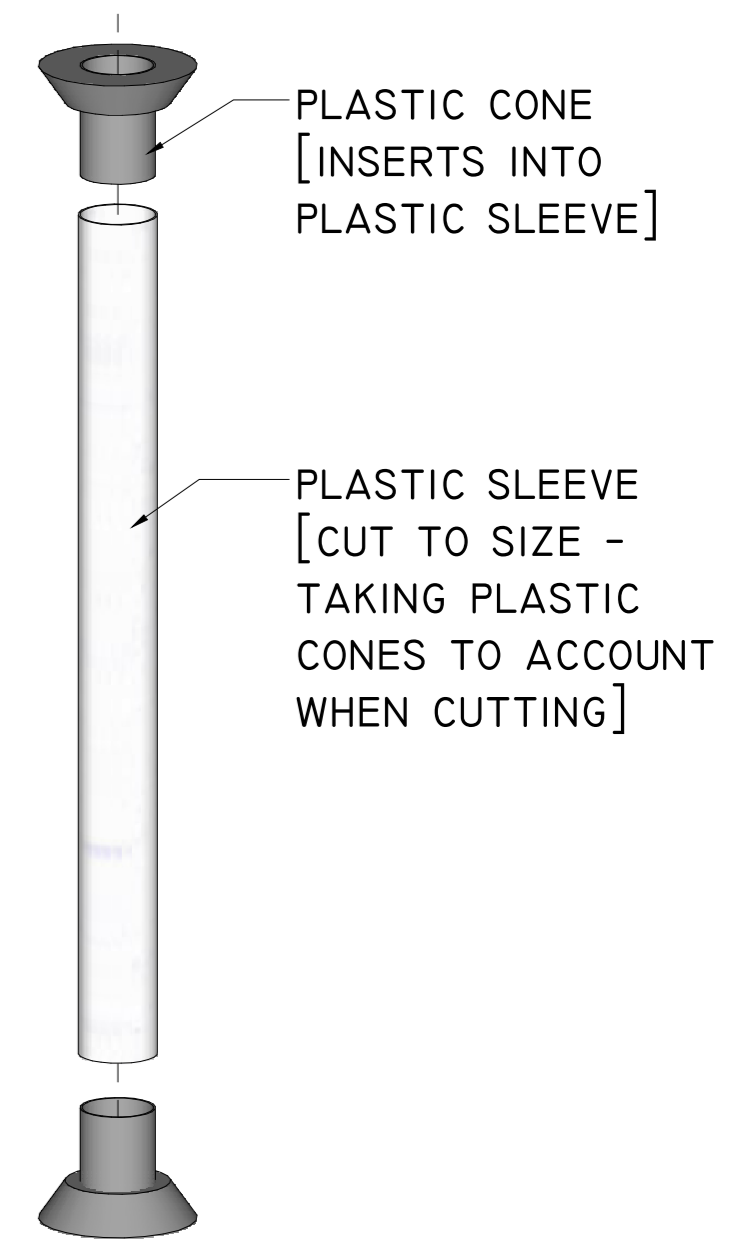
STEP FIVE:  
LOOSELY POSITION SECOND SIDE OF FORMWORK MAKING SURE ALL TIE BARS FIT THROUGH THE PRE-DRILLED TIE HOLES AND LOOSELY SECURE BY USING PLATE AND WING NUT.



STEP SIX:  
TIGHTEN ALL THE WING NUTS UNTIL THE ASSEMBLED PLASTIC SLEEVE HAS BEEN FIRMLY SECURED AND THE DESIRED WALL THICKNESS HAS BEEN ACHIEVED.

**IMPORTANT**  
DO NOT OVERTIGHTEN AS THE PLASTIC SLEEVE ASSEMBLY COULD BE CRUSHED

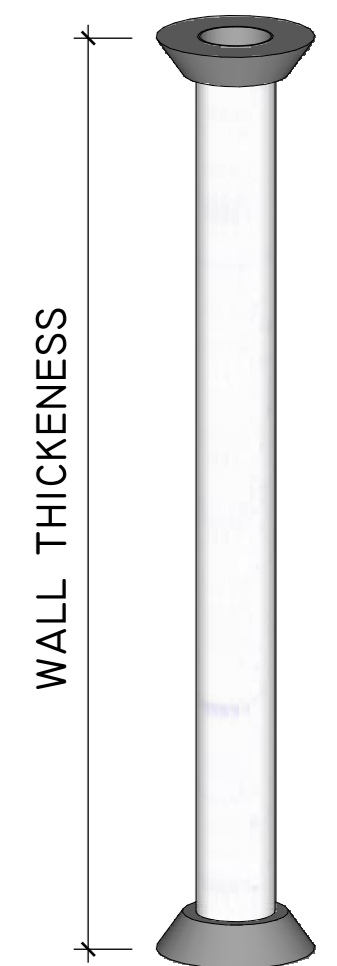
## PLASTIC SLEEVE ASSEMBLY DETAIL



## ASSEMBLED PLASTIC SLEEVE

ASSEMBLED PLASTIC SLEEVE SHOULD MEASURE DESIRED WALL THICKNESS

THE ASSEMBLY IS MEASURED FROM EDGE TO EDGE OF PLASTIC CONES



**LEGAL NOTICE:**

Fast Form™ is the Trade Mark of Fast-Form Systems Ltd and all designs are copyright and intellectual property of Fast-Form Systems Ltd and may not be reproduced or used without permission. Fast Form™ is covered by the following Patents: granted GB2508263 / GB2533172 Patents Pending GB 1616005.3 / GB 1506126.0 / US-2016-0194887 / PCT W02016 / 110663 / EP 14780541.0 / PCT GB2014 / 052586. Copyright or Trade Mark infringements will be prosecuted, if you see any similar bracket in operation without our name on it please send us an email to [info@fastformsystems.com](mailto:info@fastformsystems.com) we offer a reward for all successful prosecutions.